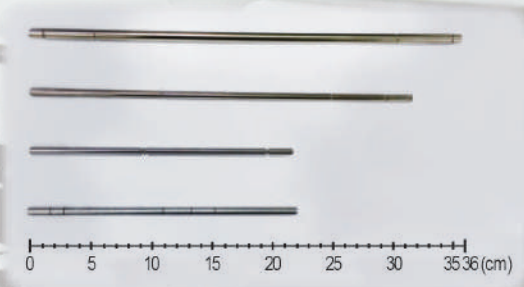
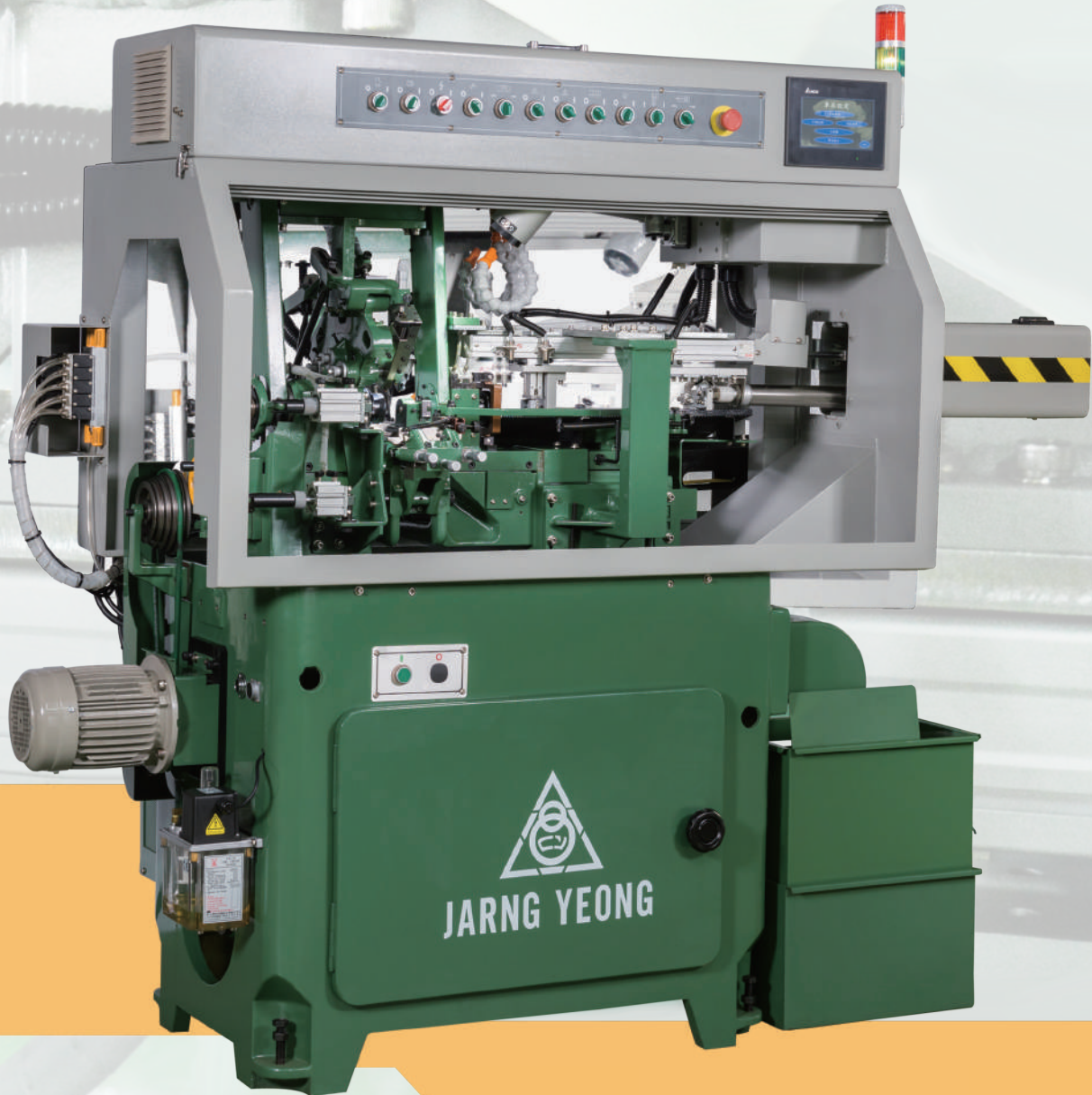


GREENWAY®

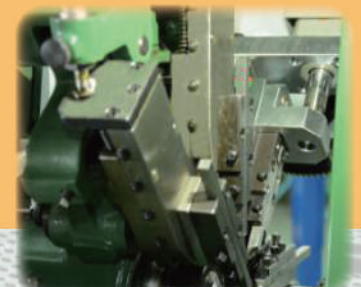
JY-1525EL Special-Purpose Auto Lathe 長軸切削自動車床 (for long-workpiece)



車削樣品圖
Samples



多段擋料位移(伺服驅動)裝置
Multi-stopper servo slide device



電動缸(刀具伺服驅動)裝置功能
Tool servo drive function

昌勇實業股份有限公司

JARNG YEONG ENTERPRISE CO., LTD

本公司之產品規格, 設計特性均不斷研究改進, 規格若有變更, 恕不另行通知。

All specifications, dimensions and design characteristics shown in this catalogue are subject to change without notice.

自動車床 AUTOMATIC LATHE

本機特點 Features of Machine

1. 本機床安裝副夾頭做輔助夾持，使切斷面平整無毛刺，並配置同步傳動。
This machine install sub-chuck as auxiliary clamping, and It makes the cut surface smooth and no burr, and also match up synchronous transmission for main-chuck and sub-chuck.
2. 採用人機介面控制，語言系統有中文/英文可供選擇，人性化溝通易於操作與設定，並有異警顯示利於故障排除。
The machine with NC Interface, the language system also including Chinese and English can choose, with humanized, easy operation and setting; with alarm indicating more helpful troubleshooting.
3. 工件長度使用伺服滑台，可做多段設定，最高可達10位置。
The workpiece length was controller by servo slide, it can make many settings at most 10 positions.
4. T4插槽刀具，可改變槽寬與深度，對加工更具方便性。
Tool No.4 can insert the groove of workpiece, it can change width and depth of groove, it's more convenient for processing.
5. 本機融合精密人機控制與傳統凸輪式車床快速加工之優點，是一部性價比極高車床。
This machine combine the advantage of NC control and cam-type lathe's rapid processing, it's a highly C/P value lathe.

特殊配件 Special Optional

1. 四號刀增加重覆插槽功能，使用PLC控制。
Tool No.4 can insert function repeatedly by PLC.
2. 可依需求設定手動、單件加工、連續加工模式。
It depends on customer's requirement, it can set mode at manual processing, single piece processing, auto continuous processing.
3. 擋料伺服滑台，可做不同槽與槽間距尺寸設定。
Stopper servo slide can set different groove distance.

機械規格 Machine Specification

| | | | |
|---|---------------|---|---------|
| 刀具數 Number of tool | 5 | 切削液幫浦(HP) Machining oil pump motor (HP) | 1/4 |
| 加工外徑範圍(mm) O.D of processing (mm) | Ø5~14 | 加工長度範圍(mm) Length of processing (mm) | 100~400 |
| Tool No.1最大加工長度(mm) Max. length of processing for tool No.1 (mm) | 50 | Tool No.5最大加工長度(mm) Max. length of processing for tool No.5 (mm) | 35 |
| 主軸最高轉速(rpm) Spindle rotation Max. speed (rpm) | 3500 | 凸輪迴轉變換速(段) The conversion of cam rotary speed (step) | 30 |
| 主軸馬達 Spindle motor (HP) | 1.5 | 凸輪軸馬達 Cam shaft motor (HP) | 2 |
| T4伺服馬達 Tool No.4 Servo motor (KW) | 0.4 | 機器重量(Kgs) Machine net weight (Kgs) | 1000 |
| 機械尺寸(L×W×H)(mm) Machine dimension L×W×H (mm) | 1800x850x1800 | | |

標準附件 Stander Accessories

| | | | |
|---|------------|--|------------|
| LED工作燈 LED Lighting device | 1個 1pcs | 伺服滑台接料模組 Servo slide unit | 1個 1pcs |
| 工具箱含調節工具 Tool box with adjustable tool. | 1組 1set | 氣壓夾爪 Atmospheric pressure jaw | 1組 1set |
| 全罩式壓克力防濺護罩 Full cover acrylic oil splash cover | 1組 1set | 成品輸送帶 part conveyer | 1組 1set |
| 冷卻油箱 50公升 Cooling oil box 50L | 1組 1set | 自動潤滑系統 Automatic lubrication system | 1組 1set |
| 集屑桶 35公升 Chip loading bucket 35L | 1組 1set | 接料盤 Finished-part plate | 1組 1set |
| 副夾頭 Sub-chuck | 1組 1set | 同步裝置 Synchronous device | 1組 1set |



昌勇實業股份有限公司
JARNG YEONG ENTERPRISE CO., LTD.

台中市沙鹿區清泉路1-9號
NO.1-9, CHING CHIEN RD, CHING CHIEN VILLAGE,
SA LU DISTRICT, TAICHUNG, TAIWAN 43346
TEL:886-4-26152157~9 FAX:886-4-26152161

代理商/AGENT